



SPECIFICATIONS LA400

DESCRIPTION

The LA400 single 12-in bass horn – known as the SuperSub, Jr.™ – contains bass horn technology that was developed for the KF940/BH822e SuperSub dual 12-in bass horn which is setting a new standard for large-scale sub bass performance. It loads a powerful woofer on a bent bass horn to provide very high output sub bass response in a compact, portable enclosure.

The efficiency provided by EAW's advanced horn-loading techniques permits the LA400 to extend overall system frequency to the lowest octaves. Critical listeners will be rewarded with tight, punchy sub bass response without the sloppy sound associated with inferior products.

APPLICATIONS

The LA400 is engineered to work as a companion to the LA460 Virtual Array Technology full range system, as well as other high-output compact loudspeaker systems. In addition to complementing the LA460 to achieve optimum extended range coverage, the LA400 shares common dimensions and provides an ideal ground stacking platform for the LA460, raising it to an appropriate height to project HF information into an audience area.

The "towel bar" handle across the mouth of the horn and cut-away lower rear corner allows users to roll the LA400 onto its rear-mounted casters with a minimum of effort. Mounting the casters on the enclosure's rear lowers the system's center of gravity during transport for easier rolling and more stable packing. A stout grill protects the drivers from objects that might fall into the horn when on its back.

Applications include:

Band PA	Nightclubs
Portable A/V	Portable DJ's

PERFORMANCE

Frequency Response (1 W @ 1m)

±3 dB	45 Hz to 250 Hz
-10 dB	40 Hz

Axial Sensitivity (dB SPL, 1 Watt @ 1m)

Sub Bass	107
----------	-----

Impedance (Ohms)

Sub Bass	8
----------	---

Power Handling, AES Standard (Watts)

Sub Bass	500
----------	-----

Calculated Maximum Output (dB SPL)

Sub Bass Peak	140.0
Sub Bass Long Term	134.0

Nominal Coverage Angle/-6 dB points (degrees)

Horizontal	180
Vertical	180

Recommended High-Pass Frequency

24 dB/Octave	32
--------------	----



PHYSICAL

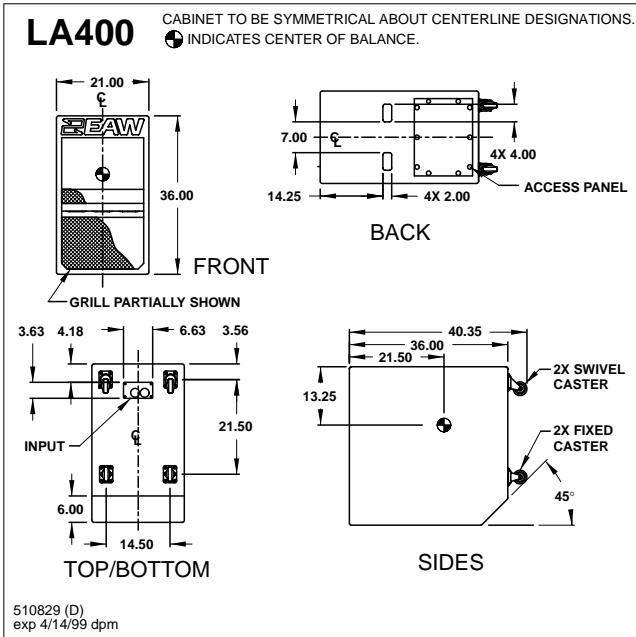
Configuration	Dedicated subwoofer horn	
Sub Bass Subsystem	12-in woofer, bent bass horn	
Cabinet Type (shape)	Rectangular	
Enclosure Materials	Baltic birch plywood	
Finish	Black polyurethane	
Connectors	2x Neutrik NL4 Speakon	
Grille	Powder coated perforated steel	
Dimensions	inches	millimeters
	Height	36 914
	Width	21 533
	Depth	36 914
	Weights	pounds
Net Weight		125 56.9
Shipping Weight		133 60.5
Companion Systems	Full Range	LA460, LA215, LA325
	Processor	MX300i





SPECIFICATIONS LA400

IMENSIONAL DRAWING



A & E SPECIFICATIONS

The sub bass system shall incorporate a 12-in woofer. The driver shall be mounted on a bent bass horn constructed of hardwood plywood veneer and structural foam.

System frequency response shall vary no more than ± 3 dB from 45 to 250 Hz. The system shall produce a Sound Pressure Level (SPL) of 107 dB SPL on axis with a power input of 1 Watt and shall be capable of producing a peak output of 140 dB SPL on axis at 1 meter. The system shall handle 500 Watts of amplifier power (AES Standard) and shall have a nominal impedance of 8 ohms.

The loudspeaker enclosure shall be rectangular in shape. It shall be constructed of 1/2-in thickness void-free cross-grain-laminated Baltic birch plywood and shall employ extensive internal bracing. It shall be finished in black polyurethane. Input connectors shall be dual Neutrik NL4 Speakon. The enclosure shall include handles and rear-mounted casters. The mouth of the horn shall be covered with a powder coated perforated steel grille.

The sub bass system shall be the EAW model LA400.